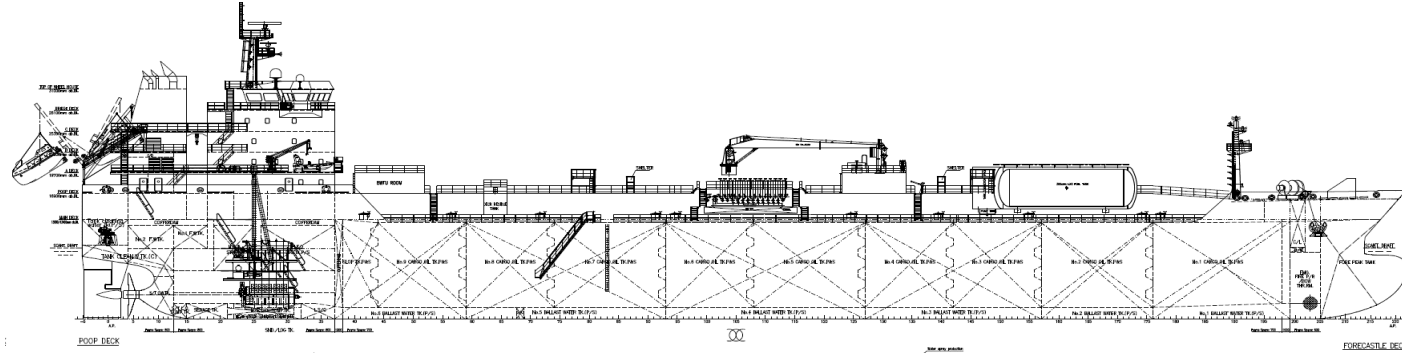


Eva Diamond	
Built:	2022
Yard:	Nantong Xiangyu Shipbuilding
Technical manager:	Victoria Shipmanagement
Commercial operator:	Hansa Tankers



Main ship particulars	
Flag	Panama
Class	NK
# Tanks	20
Tank Lining	Stainless Steel
L.O.A	157,98
Breadth	23,7
Draft S.Dwt	9,6
Dwt (Summer)	19900
Speed	14 knots
N2 Capacity	1500 m ³ /hr
IGS System	Yes



<u>10 P</u>	<u>9 P</u>	<u>8 P</u>	<u>7 P</u>	<u>6 P</u>	<u>5 P</u>	<u>4 P</u>	<u>3 P</u>	<u>2 P</u>	<u>1 P</u>
374 m3	1066 m3	1178 m3	1523 m3	1201 m3	1523 m3	1199 m3	1126 m3	1246 m3	866 m3
<u>10 S</u>	<u>9 S</u>	<u>8 S</u>	<u>7 S</u>	<u>6 S</u>	<u>5 S</u>	<u>4 S</u>	<u>3 S</u>	<u>2 S</u>	<u>1 S</u>
373 m3	1067 m3	1177 m3	1525 m3	1200 m3	1525 m3	1197 m3	1127 m3	1245 m3	867 m3
Total Cargo Tank Capacity 98 %:									22606 m3

Q88 for the vessel can be found on our web page - www.hansa-tankers.com

Chartering +47 55 90 47 70
chartering@hansa-tankers.com

Operation +47 55 90 47 80
operations@hansa-tankers.com

www.hansa-tankers.com